

# SPAN

FALL  
2007

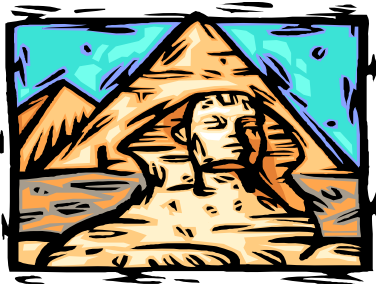
STUDENT PROJECT FOR AMITY AMONG NATIONS

*It is better to light one candle than to curse the darkness.*

## Destinations 2007

### Egypt

Egypt is compelling to the researcher who is interested in the balance between ancient history and modern, global influences. With its coral reefs in the Red Sea, pyramids, sphinx, and ancient temples, Egypt is a wealth of architecture, arts, culture, cinema, and theater. It is a land of contrasts and layers of culture, where western



European, ancient pharaonic, African, and Arab Islamic cultures converge.

This year Professor Pamela Nice, Ph.D. from the University of St. Thomas is advising a group of SPANners in Egypt. Her background includes Middle Eastern cinema, literature, and the arts. Many of the students will be studying related themes, including media and cultural identity. Others will be researching political themes including history education, opposition politics, refugees, and international development programs.

### Greece

Students are in Greece once again with Professor Theofanis Stavrou, Director of the SPAN program and a Professor of History at the University of Minnesota. Travel and research in the Mediterranean's jewel will offer scenic beauty and a rich cultural and historical landscape that includes a range of influences from the Romans, Arabs, Latin Crusaders, Venetians, Slavs, Albanians, and Italians as well as from the Byzantine Empire.



### New Zealand

New Zealand is a country of fantastic beauty: glacial mountains, fjords, rivers, geysers, forests, and long, empty beaches. Although New

Zealand is a small group of islands in near isolation, tourists come from afar to ski in the mountains and explore the unique flora and fauna.

Some would say that the human landscapes are equally noteworthy, as the cultural makeup of New Zealand includes a mixture of European descendents, Maori, Tongans, Samoans, Fijians, and other indigenous and Pacific Island groups. Maori culture in particular has undergone significant changes in recent years and the nation is now seeing a push for Maori nationalism.

Under the direction of Professor Steven M. Hoffman, Ph.D., SPANners are embracing a variety of these themes ranging from ecological planning, architecture, and tourism, to educational programs that teach empathy.

Today Greece is caught in the mix of embracing its traditional identity, while also undergoing rapid modernization. Ancient fragments may adorn the countryside, but cities like Athens are lively and cosmopolitan with all the amenities of a contemporary, metropolitan city.

Literature, art, architecture, and democracy are underlying themes in this year's research projects. Several students have designed unique proposals that include research on animal rights and a photo essay on olive farms.

## Thank you for your continued support.....

The SPAN program would like to extend special thanks for the support that makes possible a number of annual scholarships for SPANners. This year's scholarships included the following:

- The Ruth Elliff Memorial Scholarship was granted to each 2007 SPANner
- The Anne E. Hammill Memorial Scholarship was awarded to Allison Tews, Egypt
- The Judee J. Kleffmann Memorial Scholarship to Allisa Haupt, Greece, and Josh Schmidt, New Zealand
- The John D. Lindstrom Scholarship to George Kontinakis, Greece
- The Inez Wangaard Memorial Scholarship to Andrew Bockover, Egypt
- The Theofanis and Freda Stavrou All-SPAN Scholarship to Christopher Rene, Greece, and Karin Grimlund, Egypt.

The individuals and families who have donated to these scholarships have made a significant contribution to current SPAN students, and their support has had lasting impact on the SPAN program.



The 2007 SPAN send-off banquet included a reunion of past SPANners. From left to right, back, Katherine Shaw, India 1954, served as the evening's keynote speaker. She was joined by Don Gustafson, India 1954; Ruth Hauge, wife of past SPANner, Paul Hauge; Harvey Benson, India 1954; Paul Hauge, India 1954; and Bill Albertson, India 1954.

## Inauguration of two new SPAN scholarships

### Kenneth Norquist Scholarship

In recognition of Kenneth Norquist and the Norquist family's annual financial commitment and continued support of the SPAN program, the Norquist Scholarship was introduced this year. The first recipient of the scholarship is 2007 New Zealand SPANner, Lauren White.



Lauren White, left, was the initial recipient of the SPAN Kenneth Norquist Scholarship. Lauren is shown with Mr. Norquist and his wife, Elisabeth.

Kenneth Norquist was a member of the first SPAN group to Sweden in 1947. During his summer abroad he analyzed Sweden's attitude towards its "large eastern neighbor," Russia. He examined trade agreements, public opinions, and the economic aim of postwar Sweden. Kenneth remains an active member of the SPAN community not only through his financial contributions, but also

through his participation in our annual SPAN Bon Voyage Banquet and other gatherings throughout the past 60 years.

### Kathryn M. Sederberg Scholarship

2007 marks the inception of the Kathryn M. Sederberg Scholarship to the SPAN program. Six students received a scholarships from funds that Kathryn M. Sederberg graciously endowed to SPAN students.

The scholarship is intended to promote cross-cultural discoveries much the same that Kathryn experienced when she participated in the SPAN program and in many of her other travels.

Kathryn M. Sederberg, 1941-2004, (B.A., *magna cum laude*, 1963) participated in the SPAN program in Morocco in 1962. Her project involved a comprehensive study of the Moroccan daily press. While abroad, she took advantage of the opportunity to travel in Spain, France, and England.

The SPAN experience sparked in her a life-long love of travel. Getting away from it all for Kathryn entailed activities like traveling to the Arctic Circle and participating in an archeological dig in Scotland. She left a portion of her estate to assist other students along similar paths of discovery.

The following students received a scholarship from Kathryn M. Sederberg's endowment to the SPAN program:

Shannon L. Eberle, Egypt;  
Kristi Fritsch, Greece;  
Ana Staska, Greece;  
Alyssa Olson, New Zealand;  
Marisa Ontko, New Zealand;  
Laura Potter, New Zealand.

# 2007 SPANners

## Egypt

by Allison Tews

Greetings, SPAN alumni! I'm a sophomore at the College of St. Catherine, and I'm studying in Egypt this summer with a group led by Professor Pamela Nice, Ph.D., from the University of St. Thomas. Throughout spring semester, we prepared for our trip by learning some basic Egyptian colloquial Arabic, discussing Egyptian society and culture, and brainstorming ways to improve our research topics.

An area of concern regarding Cairo is the recent escalation of harassment of women in the streets, so we have been learning how to prevent and deal with that.

My research will focus on the recent influx of Iraqi refugees in Cairo. I am interested in how they live and work in a country that already has a huge labor surplus, not to mention restrictive employment laws toward foreigners.

I feel excited yet very anxious for this SPAN experience—I'm sure all of you can relate. I expect to have a life-changing experience in Egypt; I know that the other students and I will return with transformed and deepened perceptions of the world. Cairo will be a completely different world than Minneapolis, and I'm excited to experience it while knowing that I will miss life and loved ones here. I am so thankful for this unique opportunity!



SPAN group to Egypt, 2007, from left to right: Professor Pamela Nice, Ph.D., Andrew Bockover, Alison Tews, Heather Kokesh, Karin Grimlund, James Ambalathunkal, Shannon Eberle.

## New Zealand

by Lauren White

The first SPAN day was full of excitement, the second was a reminder of everything that still needed to be done, and the third was a wake-up call that we were all behind!

Seven of us plus our adviser, Professor Steven M Hoffman, Ph.D., from the University of St. Thomas, planned to make the 13-hour journey to the other side of the world in June to embark on what all former SPANners have done: completely immerse ourselves in a different culture and lifestyle, learn, and in return share that knowledge with others.

With projects such as ecotourism, green living through green roofs, teaching empathy in schools, and Maori language revitalization, we were looking forward to interesting adventures with the understanding that we would be learning much more than we will teach.

Some of us will be living together, while others will be traveling the country, but we



SPAN group to New Zealand, 2007, from left to right; Lauren White, Marisa Ontko, Laura Potter, Alyssa Olson, Jessica Powers, Professor Steven Hoffman, Ph.D.

made plans to spend some time traveling the Colorado-sized country together. Four of us arranged to share a "flat" in Auckland while the other three would be migrating from place to place, participating in programs like WOOFers to work on organic farms in exchange for free room and board.

Personally, this summer will be a little different for me as I was born and raised in New Zealand, but I have not been back since I

moved to the USA at the age of 13. Although mostly English is spoken in New Zealand, I have been told that I may be employed as the Kiwi translator for the group.

## 2007

## Phon-A-Thon

With gratitude and appreciation, we would like to thank the SPAN alumni for their steadfast financial support and continued interest in one of Minnesota's most challenging and rigorous study abroad programs.

Your donations have allowed us to distribute more than \$25,000 worth of scholarships to this year's SPANners. Never before has the SPAN program been able to offer so much support to its students to offset the cost of their field studies and travel expenses. This is truly a record-breaking year!

Your continued support has enabled the SPAN program to impact student's lives with this unique study abroad experience.

# What comes after SPAN?

## South Korea '06

by Elizabeth Jacobsen

One flight to South Korea (\$972); four months rent in Seoul (\$1200); having the time of my life, meeting new people, working with amazing advisors, and having eighty-three pages to show for it (priceless).

In the summer of 2006, SPAN gave me an invaluable opportunity to explore not only an entirely different culture and society, but to find myself as I navigated through priceless new experiences, joys, and difficulties in South Korea.

My project was to investigate the prevalence of Fetal Alcohol Syndrome (FAS) in Korea and the impact of globalization and various cultural and social factors that influence the current rates and future rates. I met with opposition upon conducting my first interview in Seoul when a physician told me point blank, "There is no FAS in South Korea and Korean women do not drink."

I trekked the city and interviewed and surveyed over 80 people: physicians, students, social workers, and service industry workers. I found that South Korean women do drink and at alarming rates that, in combination with the dramatic lack of adequate sexual, reproductive health, and drug and alcohol education, could potentially cause drastic changes in FAS epidemiology.

My topic also covered the alcohol industry, advertising, and the effects of global forces such as the World Trade Organization on current alcohol consumption rates among women in South Korea. It's hard to sum up a year's work in a few paragraphs, so feel free to stop by the SPAN library and check out my thesis on FAS if you have a few hours to spare.

Also, visit South Korea. The city of Seoul is a bundle of

energy, chaos, and serene grandeur as old meets new.

Remnants of old palaces and temples left from ancient dynasties are preserved among modern high rise apartments, sky scrapers, and mountains, a landscape, so indicative of Korea's rocky history filled with wars, occupation, and financial grief.

The many hardships have made the Korean people strong beyond what their somewhat small frames could possibly show. Students often have twelve hour days and attend school six days a week. Workers, whether they are doing road work or construction, running a small shop or food stand, or office work, seem to work around the clock.

Their hard work has not hardened their hearts though. All the Korean people I encountered were eager to help and converse with me. Through broken English and my limited Korean, I made research contacts and lasting friendships. I miss the friendships made there the most.

It is definitely bittersweet to be done, however I know that this is only the beginning. I have always had an interest in international healthcare and policies, and my experience with SPAN has given me the confidence to seek out other independent research endeavors.

I look forward to continuing my studies at the U of M and obtaining my MPH in Maternal Child Healthcare this fall. I plan to return to South Korea and incorporate research from last summer into my Master's thesis.

As I reflect on my 2006 SPAN experience to South Korea, I realize that although the program was only a little over a year long, the memories will undoubtedly last a lifetime.

## Senegal '06

by David Ansari

While in Senegal during the summer of 2006, I had a hard time allowing myself to simply "be" in the country. I worried whether I was going to make it to meetings on time, as travel can often be a challenge in Dakar, the capital city. I was never certain if I would gather enough data and be able to write at least fifty pages to produce a substantial project.

Toward the end of my trip, after realizing that other SPANers were having similar experiences, it became apparent that perhaps the idea of SPAN is not to produce something monumental, a paper to end all papers, on a given topic. Rather it is a venue for us to scratch a surface, to make mistakes, to ask questions, and to have fun. SPAN is an opportunity for us to learn if we are, in fact, interested in international work and research.

By the time I realized that I was enjoying my work in Senegal, it was nearly time to return to the States. I still did not

know if I had enough data, but I knew that I would be able to crank out a paper. The surface had certainly been scratched, but I was unsure if the work I had done would be beneficial to anyone.

I knew that in order for something truly substantial to come of my project, I had to spend more time in country. Before heading to Senegal, I had learned about Fulbright Full Grants and how to obtain one. While abroad, I met with the researchers advising me on my project and told them of my interest in returning to Senegal to continue my work.

We discussed potential projects, and I asked if they would be willing to work with me again in the future. The latter point is important for Fulbright, because they want to ensure that their researchers will hit the ground running.

As a recent grantee, I cannot stress how important it is to form ties with colleagues abroad. Fulbright is one example of how this is beneficial, but more importantly are the long-lasting, cross-cultural friendships we establish.



## SPAN's 60th Anniversary

The 2006-07 academic year marks the 60<sup>th</sup> anniversary of SPAN, the Student Project for Amity among Nations. Imagine—six decades of

providing one of the more rigorous research and travel abroad opportunities for students from all Minnesota colleges and universities.

An anniversary celebration is scheduled for October 20, 2007, at the Humphrey Institute Conference Center, 301-19th Avenue South, Minneapolis, Minn. SPANers are encouraged to arrive at 5 p.m. for a social hour and reception, and then stay for dinner and a program from 6 to 8:30 p.m.

We need your help to finalize celebration plans. If you can donate musical talents, organizational skills, SPAN memorabilia, current addresses for SPAN group members, or ideas to make this event a success, please contact the SPAN office, 612-626-1083, or [span@umn.edu](mailto:span@umn.edu).

To RSVP for this event, watch for your invitation in the mail!

# SPAN Alumni News

**Lloyd Q. Bergmon**, Sweden 1949, Gustavus Adolphus College, did his SPAN project on Sweden's approached to juvenile delinquency. He retired after 41 years of practicing law, and this year he will turn 80. He has been married 55 years and still lives in the house he purchased in 1963. He and his wife, Bonnie, have three children and six grandchildren.

\*\*\*

**John Lindstrom**, Turkey 1954, is a retired Delta Airlines International Captain and is now active with the California Avocado industry as a grower and California Avocado Society board member. He has made trips to Chile, Mexico, Israel, South Africa, Australia, and New Zealand on behalf of avocado growers. He is married with three daughters and five grandchildren.

\*\*\*

**Edith (Henderson) Ruby**, Morocco 1962, retired in 2006 from Seattle Public Schools after 32 years as a teacher of both French and English as a Second Language and as a librarian. She now teaches English at JiangXi

University in the Peoples Republic of China. This is her fourth "tour of duty" at a Chinese University.

\*\*\*

**Mary Jo Stueve**, Cuba 2002, sends her wishes for another 60 years of SPAN. "The world needs SPAN more than ever before...."

\*\*\*

**Rev. James Schoenrock**, Czechoslovakia 1967, currently lives in Sherman Oaks, California. He is happy to celebrate the 40 year anniversary of SPAN Czechoslovakia '67, and he would love to hear from the others on his trip.

**Gary Meyer**, Ethiopia 2004, notes that "This program [SPAN] is one of the most important experiences that I have ever had in my life. The intercultural communication and the cultural diversity that I have experienced is truly an experience that I will never forget."

## In Memoriam

**Dr. Walter T. Atcherson**, Germany 1952, died on September 1, 2006, at his home in Iowa City. He majored in music at Gustavus Adolphus College and taught there after graduation. Most of his career was spent as a faculty member of the music department at the University of Iowa. He is one of eight people in the 1952 SPAN group to Germany led by the late Dr. Hildegard Binder Johnson of Macalester College. Dr. Atcherson loved Germany, and he and his wife Olivia made almost yearly trips there. He is survived by his wife and six children.

\*\*\*

**Donald Lounbeg**, India 1975, passed away February 23, 2007, after battling Alzheimers. The SPAN community sends its warmest wishes to Mr. Lounbeg's family and thank them for all their contributions.



**Robert Alan Johnson**, Spain 1947, passed away in October 2000. The SPAN community would like to send its condolences to the family and are grateful for his presence in SPAN.

\*\*\*

**Robert Hudson**, Italy 1987, passed away January 1, 2007. We wish his family the best and are thankful for his contributions to the Italy SPAN group.

## Would you like to help with SPAN's 60th anniversary celebration?

As we plan the 60th Anniversary Celebration, we are seeking information about our SPAN alumni as well as assistance in making this reunion an event to remember. Please take a few minutes to fill out the form on page 6 with an update about yourself, and also fill in the form below to let us know if you are willing to help our anniversary planning committee.

Name \_\_\_\_\_

Address \_\_\_\_\_

Phone \_\_\_\_\_ E-mail \_\_\_\_\_ Country/SPAN year \_\_\_\_\_

How I can help:

I would like to help contact my former group members who have traveled to this country \_\_\_\_\_

I would like to help coordinate SPAN group reunions.

I would like to be considered as the keynote speaker at the banquet.

I would like to volunteer my music/entertainment skills or networks for the event.

**Mail to: Minnesota SPAN Association, University of Minnesota, 658 Heller Hall, 271-19th Avenue, Minneapolis, MN 55455**

**E-mail: [span@tc.umn.edu](mailto:span@tc.umn.edu)**



**Minnesota SPAN Association**  
**658 Heller Hall**  
**271 19th Ave. S.**  
**Minneapolis, MN 55455**

Non-Profit Org.  
 U.S. Postage  
 PAID  
 Minneapolis, MN  
 55401  
 Permit No. 29780

**SPAN Executive Board, 2006-2007**

**Executive Director** ..... Theofanis Stavrou  
**Program Coordinator** ..... Jamie Larson  
**Development Coordinator** ..... Shama Chopp  
**Development Coordinator** ..... Susan Wiese  
**President** ..... John Dewey  
**Vice President** ..... Tessa Archambault  
**Program Chairs** ..... Marniasha Ginsberg, Meghan McRoberts  
**Publicity Chairs** ..... Bridget Becker, Michael Stafford  
**Speakers' Bureau Chair** ..... Sharon Lee  
**Finance Chair** ..... Chris Wagner  
**Alumni Relations** ..... Doug Gardner, Jenny Moeller  
**2006 Advisers** ..... Victoria Coifman, Elizabeth Klages, Sang-Seok Yoon

**SPAN Office** **Phone: (612) 626-1083**  
**658 Heller Hall** **E-mail: span@umn.edu**  
**Minneapolis, MN 55455** **Web site: www.spanalumni.org**

**SPAN Executive Board, 2007-2008**

**Executive Director** ..... Theofanis Stavrou  
**Program Coordinator** ..... Jamie Larson  
**Development Coordinator** ..... Shama Chopp  
**Special Projects Coordinator** ..... Susan Wiese  
**President** ..... Lisa Marie Elmer  
**Vice President** ..... James Ambalathunkal  
**Secretary** ..... Heather Kokesh  
**Program Chairs** ..... Shannon Eberle, Kathryn Hecht  
**Publicity Chairs** ..... Alyssa Olson, Laura Potter  
**Speakers' Bureau Chairs** ..... Marisa Ontko, Joshua Schmidt  
**Finance Chairs** ..... Katherine Goertz, Karin J Grimlund  
**Alumni Relations Chairs** ..... Andrew Bockover, Lauren White  
**2007 Advisers** ..... Pamela Nice, Theofanis Stavrou, Steven Hoffman  
**Newsletter Editor** ..... Marjorie Savage

*To request this information in alternative format, please call (612) 626-1083.  
 The University of Minnesota is an equal opportunity educator and employer.*

**Where are you?**



We would like to hear from SPAN alumni with information on where you are and what you're doing now. Please take a few minutes to tell us what is new and exciting in your life. The members of your SPAN group will be happy to read about you in an upcoming issue of the SPAN newsletter.

Name \_\_\_\_\_  
 Address \_\_\_\_\_  
 City, State, Zip/Country \_\_\_\_\_  
 E-mail \_\_\_\_\_ Country/SPAN year/College attended \_\_\_\_\_

Your update or message:

\_\_\_\_\_  
 \_\_\_\_\_  
 \_\_\_\_\_  
 \_\_\_\_\_

**Mail to: Minnesota SPAN Association, University of Minnesota, 658 Heller Hall, 271-19th Avenue, Minneapolis, MN 55455**  
**E-mail: span@umn.edu**